

# SALON BABETTE



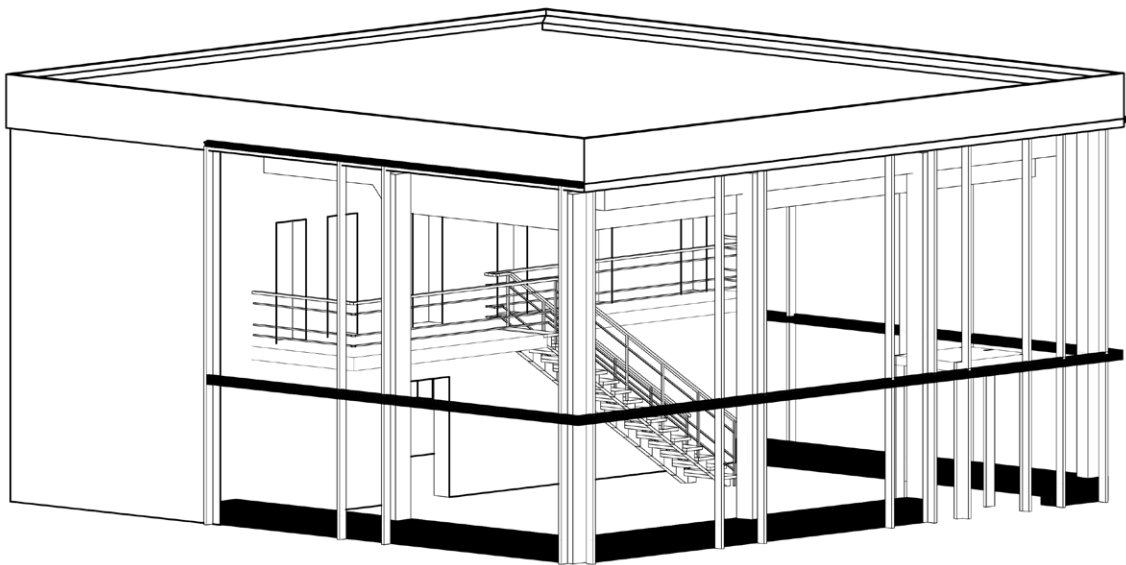
Bundesarchiv, Bild 183-C0422-0005-00 | Foto: Brüggmann, Eva | 22. April 1964

## THE 'LITTLE SISTER' OF CAFE MOSKAU

**Salon Babette**  
Karl-Marx-Allee 36  
10178 Berlin  
[www.salonbabette.com](http://www.salonbabette.com)

Fon: +49.30.470 807 77  
[event@salonbabette.com](mailto:event@salonbabette.com)

## SPACE - PAST



Former beauty salon „Babette“ was built in the early 1960s as one of five shop buildings from designs by Josef Kaiser. While the other four buildings were similar structures, „Babette“ was architecturally assigned to Cafe Moskau.

The light-flooded ground floor was used as a showroom for cosmetic products and on the upper floor were five treatment rooms. The striking staircase connected the ground floor and the gallery part of „Babette“.

At one time the roof of Salon „Babette“ was decorated with illuminated advertising designed by Professor Wittkugel which was part of the unified Karl-Marx-Allee look. A very evident feature of the historical monument is the great glass front and the cubic structure of the building.

SALON BABETTE  
BERLIN



CAFE MOSKAU  
BERLIN

## EVENT SPACE - FUTURE

In the future the space **Madona (ground floor)** will be a multifunctional room. Access is through the entrance at Karl-Marx-Allee equipped with a bar, access to the backstage and a stage.

**Elva (upper floor)** will be a small meeting-, workshop- or second event room which will be accessible through the staircase.

Both floors will be equipped with technical equipment suitable for events as well as functional furniture in the style of the 1960s.

The backstage area and restrooms will be on the ground floor.

Salon Babette can be booked separately or together with Cafe Moskau. To access Salon Babette from Cafe Moskau the east entrance and the main entrance of Salon Babette at the Karl-Marx-Allee need to be used.

## MEASUREMENTS & SEATING OPTIONS

LOCATION	SPACE	HEIGHT	PARTY	THEATRE- SEATING	CLASSR.	LIST PRICES PER DAY*
<b>entire venue</b>	<b>126 m<sup>2</sup></b>		<b>199</b>	<b>60</b>	<b>78</b>	<b>5.500 €</b>
<b>Madona</b> (ground floor)	95 m <sup>2</sup>	5,30 m		60	40	
<b>Elva</b> (upper floor)	45 m <sup>2</sup>	2,78 m		45	30	

The seating numbers are benchmarks and may depend on layout, size of chairs and tables and also the set-up of the stage and technical features. All prices are net prices and are exclusive of VAT. Additionally we charge costs for power, water, staff and cleaning. Use of internet (10 Mbit/s) is included in the rental price. All specifications are subject to change and have to be inspected on-site.

\*50% of the list price will be charged for set-up and disassembly days.

## CONTACT & PARTNER

### VENUE

Salon Babette  
Karl-Marx-Allee 36  
10178 Berlin

### OFFICE

Cafe Moskau GmbH  
Milastraße 2  
10437 Berlin

### REQUEST, VISIT & EVENT ORGANIZATION

Sales Department  
Fon +49.30.470 807 77  
event@cafemoskau.com

### QUESTIONS CONCERNING YOUR EVENT PRODUCTION

Production Department  
Fon +49.30.470 809 00  
produktion@cafemoskau.com

### SECURITY

FSB-Security - Jörn Ullmann  
joern.ullmann@fsb-security.com

### FURNITURE

Party Rent Berlin  
Nora Ramm  
Fon +49.30.200 061 513 7  
noraramm@partyrent.com

### LIGHT & SOUND

AMBION GmbH  
Mathias Kaminski  
Fon +49.30.726 278 412 3  
kaminski@ambion.de

### CATERING

In the future we will work with a catering partner which has created a special food concept for Salon Babette. At the moment we can not provide more information, but will keep you posted.

Furthermore, our preferred catering partner from Cafe Moskau will be happy to assist you with customized food concepts for your event.

## LOCATION & ARRIVAL



Salon Babette is located in Berlin-Mitte, next to Cafe Moskau, a five minute walk from Alexanderplatz and close to the underground station Schillingstraße.

### PUBLIC TRANSPORTATION

From Alexanderplatz: Underground line U5, one station to Schillingstraße

From Hauptbahnhof: S-Bahn S5 or S7 to S-Bahnhof Alexanderplatz, continue with underground line U5

From airport Tegel (TXL): Bus TXL to Alexanderplatz, continue with underground line U5

Taxi: airport SXF 45 minutes

### PARKING

There is sufficient public parking available.