



# CAFE MOSKAU



**PURE ELEGANCE MEETS HISTORY  
WITH MODERN INFRASTRUCTURE**

Cafe Moskau  
Karl-Marx-Allee 34  
10178 Berlin  
[www.cafemoskau.com](http://www.cafemoskau.com)

Fon: +49.30.470 807 77  
[event@cafemoskau.com](mailto:event@cafemoskau.com)

## EVENT SPACES

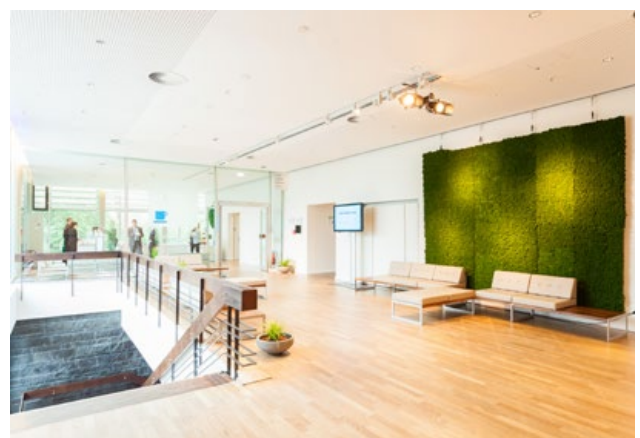


This architectural icon was built in 1964 on one of the capital's most popular streets: Karl-Marx-Allee in the heart of Berlin.

As a wine bar, nightclub and tea shop, the property was an eclectic mix of everything and a central meeting place for A-listers. After extensive renovations, the former restaurant re-opened in 2009 as a multi-purpose venue.

The heritage-listed establishment is particularly distinguished by its historic elements. Numerous details have been preserved from its early years giving it a unique charm. These include the elaborate wall mosaics, the illuminated lettering and the Sputnik satellite at the main entrance.

The floor-to-ceiling windows and atrium style are additional trademarks of the building, whose light-filled rooms offer patrons generous, unparalleled transparency.



## EVENT SPACES



Almost 2,600 sq m of function space stretches over two floors providing enough room to hold any kind of event. The heart and soul of the venue are the two large halls - „Almaty“ on the ground floor and „Moskau“ (Moscow) on the upper level.

10 more rooms offer lots of space for workshops, lounges, buffets and much more.

To guarantee you maximum flexibility the entire venue comes without furniture and almost all rooms feature mobile partition systems, which enable easy modifications and variations.

A curtain system with blackout curtains allows to darken the rooms for projections.

Cafe Moskau includes two popular outdoor areas, which are ideal for receptions, catering and breaks outdoors.

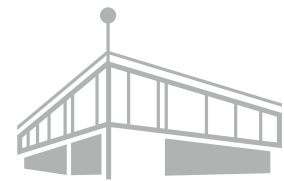
The Atrium in the center of Cafe Moskau enables direct access to the foyers, the hall Almaty, and the rooms Jerewan (Yerevan), Duschanbe (Dushanbe) and Bischkek (Bishkek).

The Rosengarten (rose garden) with its very own charm, water feature and roses enables direct access to the rooms Asgabat, Duschanbe (Dushanbe) and Jerewan (Yerevan).

Get impressed by the charm of Cafe Moskau and arrange a site inspection with our team.


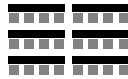

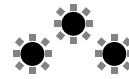
We are looking forward to welcoming you!





CAFE MOSKAU  
BERLIN

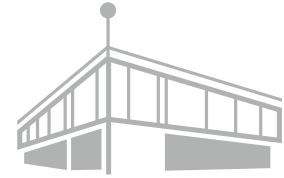
## MEASUREMENTS & SEATING OPTIONS

LOCATION	SPACE	HIGHT					LIST PRICES PER DAY*
<b>floor 1 &amp; 2</b>	<b>3.135 m<sup>2</sup></b>						<b>19.500 €</b>
<b>Ground floor</b>			<b>Pax</b>	<b>Pax</b>	<b>Pax</b>	<b>Pax</b>	
Almaty	382 m <sup>2</sup>	3,50 m	375	182	288	230	5.000 €
Asgabat	160 m <sup>2</sup>	3,50 m	141	72	108	100	2.500 €
Duschanbe	67 m <sup>2</sup>	3,50 m	24	15	24	-	1.500 €
Jerewan	67 m <sup>2</sup>	3,50 m	20	-	-	20	1.500 €
Bischkek	81 m <sup>2</sup>	3,50 m	78	30	42	40	1.500 €
Foyer Baku	105 m <sup>2</sup>	3,50 m	-	-	-	-	-
Foyer Taschkent	73 m <sup>2</sup>	3,20 m	-	-	-	-	-
Office	19,50 m <sup>2</sup>	3,50 m			8		
<b>Upper floor</b>							
Moskau	446 m <sup>2</sup>	3,90 m	433	232	378	280	5.000 €
Vilnius	66,50 m <sup>2</sup>	3,50 m	64	25	36	30	1.500 €
Tallinn	60 m <sup>2</sup>	3,50 m	46	24	30	30	1.500 €
Riga	65 m <sup>2</sup>	3,50 m	46	24	30	30	1.500 €
Minsk	88 m <sup>2</sup>	3,50 m	63	34	36	30	1.500 €
Chisinau	112 m <sup>2</sup>	3,50 m	108	-	-	-	1.500 €
Foyer Kiew	113,50 m <sup>2</sup>	3,50 m	-	-	-	-	-
Foyer Tiflis	69 m <sup>2</sup>	3,50 m	-	-	-	-	-
<b>Outdoor</b>							
Rosengarten	400 m <sup>2</sup>		-	-	-	-	1.000 €
Atrium	222 m <sup>2</sup>		-	-	-	-	1.000 €
<b>Basement</b>							
Sputnik	127 m <sup>2</sup>	2,80 m	98	39	-	-	1.000 €

Please let us know if renting Cafe Moskau is interesting for you. We would be pleased to draft you an individual offer.

The maximum capacity for each floor is 800 people. The seating numbers are benchmarks and may depend on the concept and set-up. All prices are net prices and are exclusive of VAT. Additionally we charge costs for power, water, staff and cleaning. A 10 Mbit/s network (up- and download-rate of 4 Mbit/s) for internal usage is included. All specifications are subject to change and have to be inspected on-site.

\*50% of the listed price is charged for set-up and dismantling days.

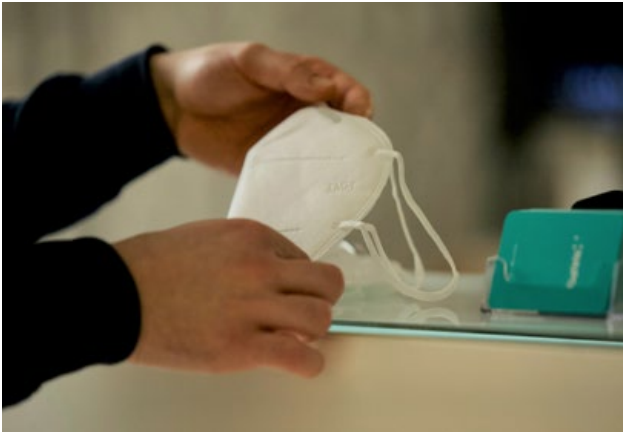


CAFE MOSKAU  
BERLIN

# FLOOR PLAN



## DIVERSE SERVICES



### CONCEPT OF HYGIENE

In accordance with the latest ordinance to control the progressive spread of SARS-CoV-2 Coronavirus and taking into account the current SARS-CoV-2 Infection Protection Ordinance, we will create an individual concept of hygiene for your event. The aim is to hold a safe event within the scope of all given regulations in the context of the current pandemic situation.

Our certified hygiene officer will approve and certify the concept.



### STAFF

We have a large network of competent, experienced service providers available to assist you in various areas. Starting from barista to bartender up to first aid team, photographer, hosts/hostess or security.

We are more than happy to support you with your staff planning.



### BEVERAGE PACKAGES

We offer many kinds of beverage packages whether you need a standard conference package, organic beverages or customized cocktails.

Each beverage package can be upgraded with coffee specialities. You can choose between an automatic and an Italian coffee machine with a barista who will fascinate your guests with artistic Latte Art.

## DIVERSE SERVICES



### BRANDING SPACES

When it comes to branding your event, the exterior facades of Cafe Moskau feature two banner spaces providing room for your personalised banner with high visibility.

Another branding option could be the plotting of the window facade, the mobile bar system or the wardrobe counter.



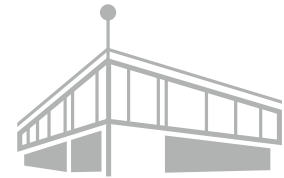
### INTERNET

All event spaces at Cafe Moskau are full Wifi-enabled (bandwidth may be upgraded from 10 Mbit/s to 1 Gbit/s (synchronously)). Let us know your needs and we'll draw up a tailor-made quote. When using the Wifi, you will be given personalised access details in advance.



### MOBILE BARSYSTEM

Our mobile bar system includes bar elements and shelves with coloured LED lights as well as fridges. All elements can be branded.



CAFE MOSKAU  
BERLIN

## CONTACT & PARTNER

### LOCATION

Cafe Moskau  
Karl-Marx-Allee 34  
10178 Berlin

### DELIVERIES

Neue Blumenstraße 13

### OFFICE

Cafe Moskau GmbH  
Milastraße 2  
10437 Berlin

### ENQUIRIES & VISITS

Sales Team  
Fon +49.30.470 807 77  
event@cafemoskau.com

### EVENT ORGANISATION & QUESTIONS CONCERNING PRODUCTION

Production Team  
Fon +49.30.470 809 00  
produktion@cafemoskau.com

### SECURITY

FSB-Security  
Jörn Ullmann  
joern.ullmann@fsb-security.com

### CATERING

Einhorn Restaurations GmbH  
Bernhard Braig  
Fon +49.30.343 354 0  
bernhard.braig@einhorn-catering.de

Hoflieferanten Berlin  
Michael Lammert  
Fon +49.30.200 086 611  
lammert@hoflieferanten.berlin

Kochbox-Event Berlin GmbH  
Katharina Müller  
Fon +49.30.857 426 16  
info@kochbox.com

Kofler & Kompanie Newcom GmbH  
Konstantina Dagianta  
Fon +49.170.389 770 0  
kdagianta@kofler-kompanie.com

Wild & Wiese GmbH & Co. KG  
Ralf Dekorsy  
Fon +49.30.657 779 01  
ralf.dekorsy@wildundwiese.de

### FURNITURE & DECORATION

Party Rent Berlin  
Katharina Riedesel  
Fon +49.30.200 061 513 7  
katharina.riedesel@partyrent.com

### LIGHT & SOUND

AMBION GmbH  
Mathias Kaminski  
Fon +49.30.726 278 425 0  
cafemoskau@ambion.de

### HOTEL

Hotel Amano Grand Central  
Julia Herchenbach  
Fon +49.30.400 300 210 1  
Heidestraße 62, 10557 Berlin  
herchenbach@amanogroup.com

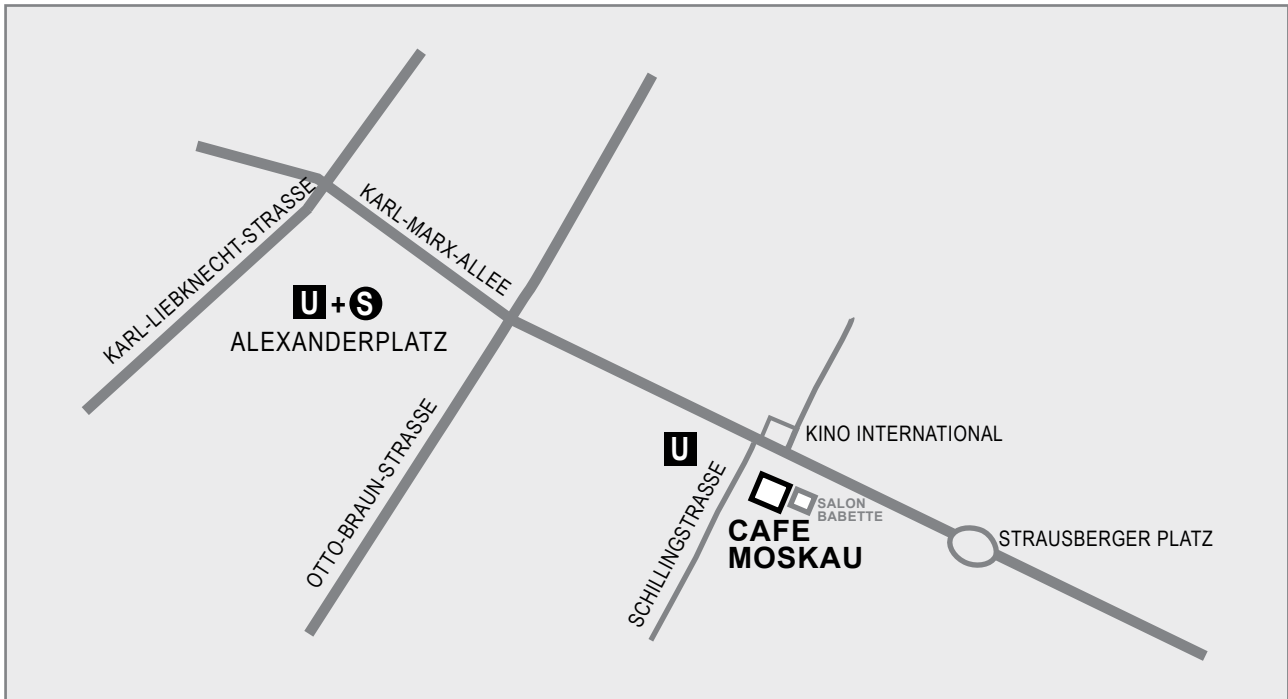
Hotel Amano  
Julia Herchenbach  
Fon +49.30.400 300 210 1  
Auguststraße 43, 10119 Berlin  
herchenbach@amanogroup.com

### DRIVER SERVICE

BerlinMobil Frank Richert GmbH  
Doreen Plischkaner  
Fon +49.30.422 199 14  
plischkaner@berlinmobil.de



## LOCATION & ARRIVAL



Cafe Moskau is located in Berlin-Mitte, a five minute walk from Alexanderplatz and directly in front of underground station Schillingstraße.

### **PUBLIC TRANSPORTATION**

From Alexanderplatz: underground line U5 to Schillingstraße

From Hauptbahnhof (main station): underground line U5 to Schillingstraße

From airport BER: Regional trains FEX/ RE7/ RB 14 to Hauptbahnhof (main station), underground line U5 to Schillingstraße

### **PARKING**

There is sufficient public parking available.