



CAFE MOSKAU



**PURE ELEGANCE MEETS HISTORY
WITH MODERN INFRASTRUCTURE**

Cafe Moskau
Karl-Marx-Allee 34
10178 Berlin
www.cafemoskau.com

Fon: +49.30.470 807 77
event@cafemoskau.com

CERTIFIED PARTNER
**SUSTAINABLE
BERLIN**

High Performer


EVENT SPACES



This architectural icon was built in 1964 on one of the capital's most popular streets: Karl-Marx-Allee in the heart of Berlin.

As a wine bar, nightclub and tea shop, the property was an eclectic mix of everything and a central meeting place for A-listers. After extensive renovations, the former restaurant re-opened in 2009 as a multi-purpose venue.

The heritage-listed establishment is particularly distinguished by its historic elements. Numerous details have been preserved from its early years giving it a unique charm. These include the elaborate wall mosaics, the illuminated lettering and the Sputnik satellite at the main entrance.

The floor-to-ceiling windows and atrium style are additional trademarks of the building, whose light-filled rooms offer patrons generous, unparalleled transparency.



EVENT SPACES



Almost 2,600 sq m of function space stretches over three floors providing enough room to hold any kind of event.

The heart and soul of the venue are the two large halls - „Almaty“ on the ground floor and „Moskau“ (Moscow) on the upper level.

10 more rooms offer lots of space for workshops, lounges, buffets and much more.

To guarantee you maximum flexibility the entire venue comes without furniture and almost all rooms feature mobile partition systems, which enable easy modifications and variations.

A curtain system with blackout curtains allows to darken the rooms for projections.

Cafe Moskau includes two popular outdoor areas, which are ideal for receptions, catering and breaks outdoors.

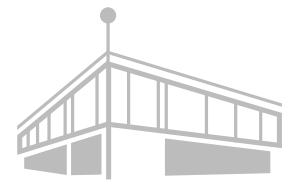
The Atrium in the center of Cafe Moskau enables direct access to the foyers, the hall Almaty, and the rooms Jerewan (Yerevan), Duschanbe (Dushanbe) and Bischkek (Bishkek).

The Rosengarten (rose garden) with its very own charm, water feature and roses enables direct access to the rooms Asgabat, Duschanbe (Dushanbe) and Jerewan (Yerevan).

Get impressed by the charm of Cafe Moskau and arrange a site inspection with our team.


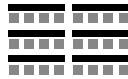

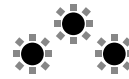
We are looking forward to welcoming you!





CAFE MOSKAU
BERLIN

MEASUREMENTS & SEATING OPTIONS

SPACE	AREA	HIGHT					LIST PRICES PER DAY*
entire venue incl. outdoor spaces	2.596,50 m²						21.500 €
Ground floor**	954,50 m²		Pax	Pax	Pax	Pax	10.750 €
Almaty	382 m ²	3,50 m	375	182	288	230	-
Asgabat	160 m ²	3,50 m	141	72	108	100	-
Duschanbe	67 m ²	3,50 m	24	15	24	-	-
Jerewan	67 m ²	3,50 m	20	-	-	20	-
Bischkek	81 m ²	3,50 m	78	30	42	40	-
Foyer Baku	105 m ²	3,50 m	-	-	-	-	-
Foyer Taschkent	73 m ²	3,20 m	-	-	-	-	-
Office (up to 8 Pax)	19,50 m ²	3,50 m					
Upper floor**	1020 m²						10.750 €
Moskau	446 m ²	3,90 m	433	232	378	280	-
Vilnius	66,50 m ²	3,50 m	64	25	36	30	-
Tallinn	60 m ²	3,50 m	46	24	30	30	-
Riga	65 m ²	3,50 m	46	24	30	30	-
Minsk	88 m ²	3,50 m	63	34	36	30	-
Chisinau	112 m ²	3,50 m	108	-	-	-	-
Foyer Kiew	113,50 m ²	3,50 m	-	-	-	-	-
Foyer Tiflis	69 m ²	3,50 m	-	-	-	-	-
Outdoor spaces							
Rosengarten	400 m ²		-	-	-	-	1.000 €
Atrium	222 m ²		-	-	-	-	1.000 €
Basement							
Sputnik	127 m ²	2,80 m	98	39	-	-	1.000 €
Club	411,50 m ²	3,00 m					8.500 €

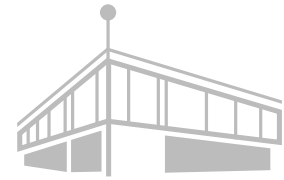
* 50% of the listed price is charged for set-up and dismantling days.

The maximum capacity for each floor is 800 people.

The seating numbers are benchmarks and may depend on the concept and set-up. All specifications are subject to change and have to be inspected on-site.

Additionally we charge costs for power, water, staff and cleaning. A 10 Mbit/s network (up- and download-rate of 4 Mbit/s) for internal usage is included.

All prices are net prices and are exclusive of VAT.



CAFE MOSKAU
BERLIN

FLOOR PLAN



Ground floor

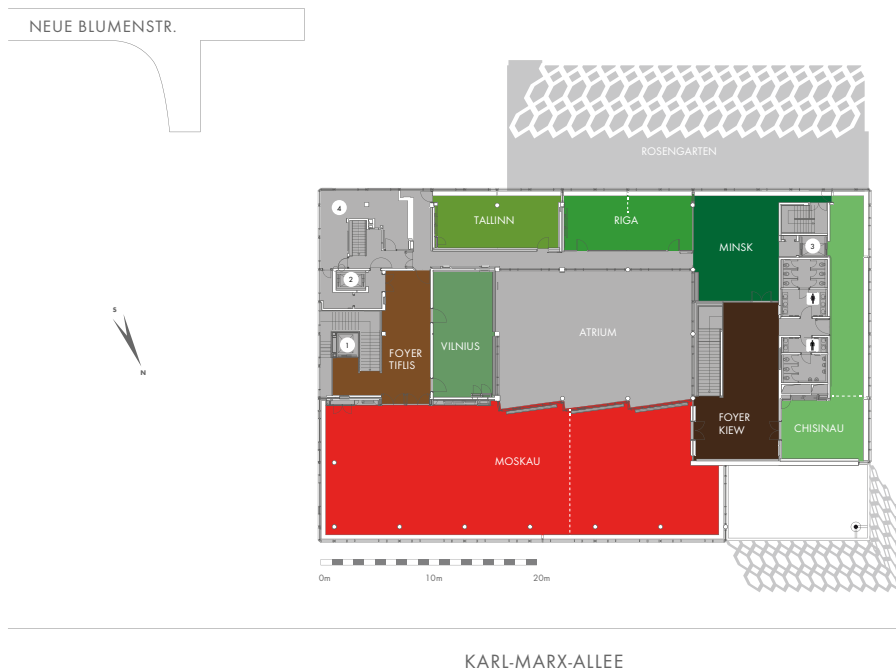
barrier-free

- **ALMATY**
Floor space: 382 qm
Height: 3,50 m
- **ASGABAT**
Floor space: 160 qm
Height: 3,50 m
- **BISCHKEK**
Floor space: 81 qm
Height: 3,50 m
- **DUSCHANBE**
Floor space: 67 qm
Height: 3,50 m
- **JEREWAN**
Floor space: 67 qm
Height: 3,50 m
- **FOYER OST TASCHKENT**
Floor space: 73 qm
Height: 3,20 m
- **FOYER WEST BAKU**
Floor space: 105 qm
Height: 3,50 m
- **FOYER CLUB**
Floor space: 81,5 qm
Height: 3,70 m
- **OFFICE (CLIENT)**
Floor space: 73 qm
Height: 3,20 m
- **OUTDOOR AREAS:**
ATRIUM
Floor space: 222 qm
ROSENGARTEN
Floor space: 400 qm

SCHILLINGSTR.

- 1 Cloakroom west
- 2 Cloakroom west
- 3 Elevator
- 4 Goods lift
- 5 Elevator/Goods lift
- 6 Catering backstage

KARL-MARX-ALLEE



Upper floor

barrier-free

- **MOSKAU**
Floor space: 446 qm
Height: 3,90 m
- **CHISINAU**
Floor space: 112 qm
Height: 3,50 m
- **TALLINN**
Floor space: 60 qm
Height: 3,50 m
- **RIGA**
Floor space: 65 qm
Height: 3,50 m
- **VILNIUS**
Floor space: 66,5 qm
Height: 3,50 m
- **MINSK**
Floor space: 88 qm
Height: 3,50 m
- **FOYER OST TIFLIS**
Floor space: 69 qm
Height: 3,50 m
- **FOYER WEST KIEW**
Floor space: 113,5 qm
Height: 3,50 m

SCHILLINGSTR.

- 1 Elevator
- 2 Goods lift
- 3 Elevator/Goods lift
- 4 Catering backstage
- 5 Mobile partition

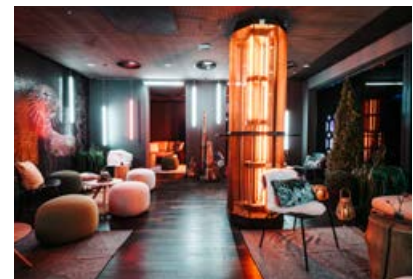
KARL-MARX-ALLEE

CLUB – NEW EVENT SPACE

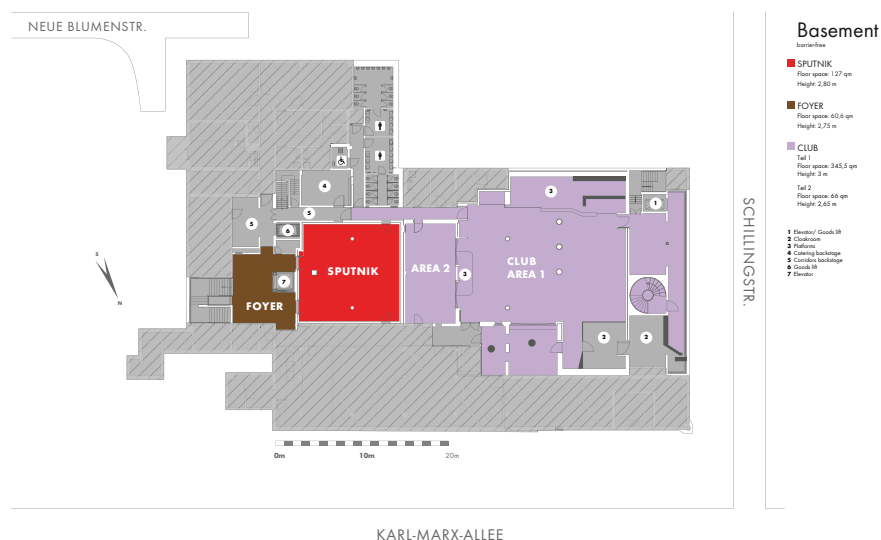
The newly renovated club in the basement of Cafe Moskau is available as an additional event space or for smaller event concepts.

Access is either through the Baku foyer on the ground floor or directly from Schillingstraße. A fully equipped cloakroom is also available.

The flexible space is free of furniture and technical equipment, allowing it to be customised to suit any concept.



© Offenblende | Michael Wendt



DIVERSE SERVICES



STAFF

We have a large network of competent, experienced service providers available to assist you in various areas. Starting from barista to barkeeper up to first aid team, photographer, hosts/hostess or security.

We are more than happy to support you with your staff planning.



BEVERAGE PACKAGES

We offer many kinds of beverage packages whether you need a standard conference package, organic beverages or customized cocktails.

Each beverage package can be upgraded with coffee specialities. You can choose between an automatic and an italian coffee machine with a barista who will fascinate your guests with artistic Latte Art.



ALL-INCLUSIVE

At your request, we can handle the coordination, management and billing of partner services for event technology, food catering and equipment including decoration. A handling fee will be charged for each final order of the respective partner services.

This allows us to offer you an almost all-inclusive package as part of the venue rental.

Event conception and guests management are excluded from this service.

DIVERSE SERVICES



MOBILE BARSYSTEM

Our mobile bar system includes bar elements and shelves with coloured LED lights as well as fridges. All elements can be branded.



INTERNET

All event spaces at Cafe Moskau are full Wifi-enabled (bandwidth may be upgraded from 10 Mbit/s to 1 Gbit/s (synchronously)). Let us know your needs and we'll draw up a tailor-made quote. When using the Wifi, you will be given personalised access details in advance.



MARQUEES & CLOAKROOM

We can offer various marquee options to extend function space of Cafe Moskau. Both outdoor areas Atrium and Rosengarten can be covered using marquees. The eastern and western foyer offer enough space for a cloakroom holding up to 500 clothing items.

OUR OTHER VENUES



TEC EVENT CAMPUS

TEC EVENT CAMPUS offers 4 barrier-free event spaces with daylight.

The biggest space is Main Hall with 834 m² und capacity of 800 seats in theatre style.

The old viadukt of the Siemens railway gives the large outdoor spaces it's own charme.

Keyfacts

TEC-EVENT-CAMPUS.COM

Address: Wohlrabedamm 7
13629 Berlin

- 1.400 m² event space
- 5.000 m² outdoor space
- Parking facility for up 60 vehicles
- capacity for 1.000 Pax
- permissible floor load of 1.5 t per m²
- free of furniture, AV and food catering



SALON BABETTE

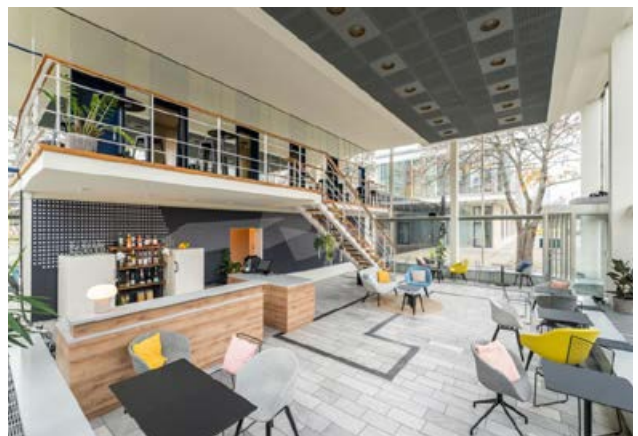
The former beauty salon „Babette“ is a multifunctional venue with two levels, a fixed bar, lounge furniture and event technology.

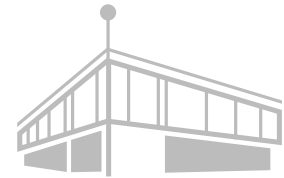
SALON BABETTE
BERLIN



SALONBABETTE.COM

Address: Karl-Marx-Allee 36
10178 Berlin





CAFE MOSKAU
BERLIN

CONTACT & PARTNER

LOCATION

Cafe Moskau
Karl-Marx-Allee 34
10178 Berlin

DELIVERIES

Neue Blumenstraße 13

OFFICE

Cafe Moskau GmbH
Milastraße 2
10437 Berlin

ENQUIRIES & VISITS

Sales Team
Fon +49.30.470 807 77
event@cafemoskau.com

EVENT ORGANISATION & QUESTIONS CONCERNING PRODUCTION

Production Team
produktion@cafemoskau.com

SECURITY

FSB-Security
Jörn Ullmann
joern.ullmann@fsb-security.com

FURNITURE & DECORATION

Party.Rent Berlin
Katharina Riedesel
Fon +49.30.200 061 513 7
katharina.riedesel@partyrent.com

EVENT TECHNOLOGY

AMBION GmbH
Christian Rathgeber-Fietzke
& Marc Dyrzcz
Fon +49.30.726 278 412 1
cafemoskau@ambion.de

CATERING

Fuchs + Gans GmbH
Gernot Karger & Paula Möhring
Fon +49.30.804 935 69
info@fuchsundgans.com

Hoflieferanten Berlin
Michael Lammert
Fon +49.30.200 086 611
lammert@hoflieferanten.berlin

HOTEL

Amano Group
up to 10 rooms – Izabella Lugin
lugin@amanogroup.com

10+ rooms – Monique Belling
belling@amanogroup.com

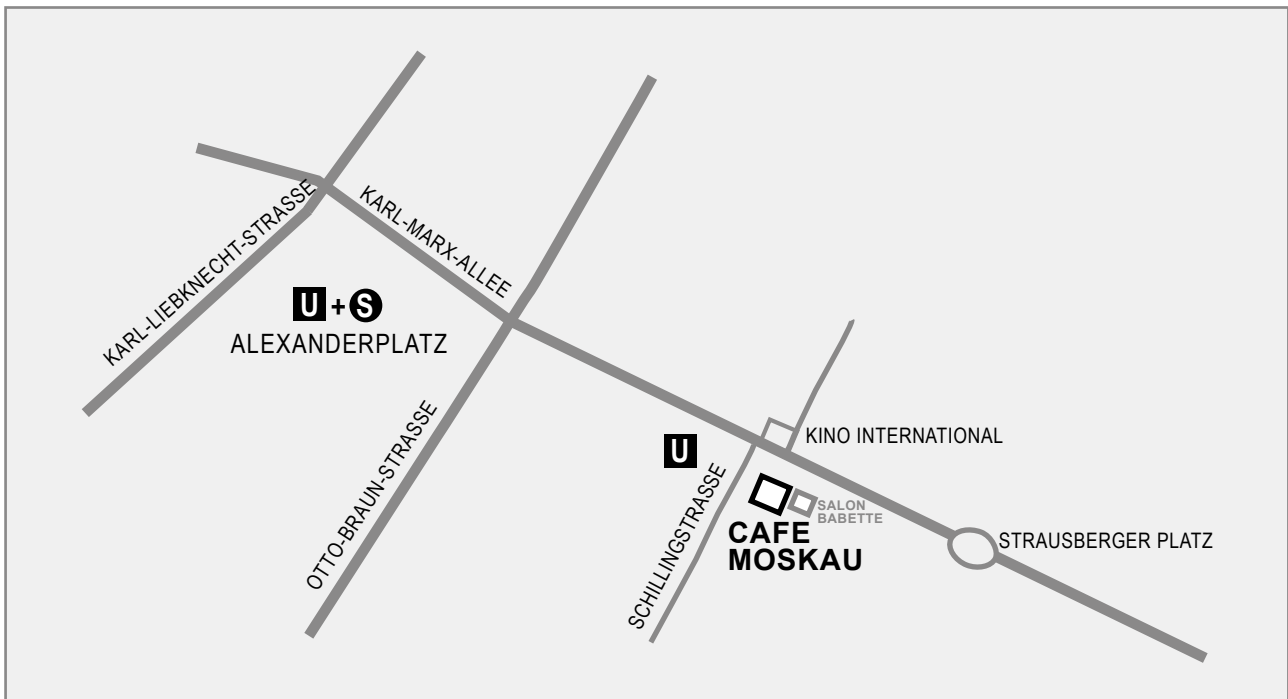
DRIVER SERVICE

BerlinMobil Frank Richert GmbH
Doreen Plischkaner
Fon +49.30.422 199 14
plischkaner@berlinmobil.de

Kochbox-Event Berlin GmbH
Katharina Müller
Fon +49.30.857 426 16
info@kochbox.com

Wild & Wiese GmbH & Co. KG
Ralf Dekorsy
Fon +49.30.657 779 01
ralf.dekorsy@wildundwiese.de

LOCATION & ARRIVAL



Cafe Moskau is located in Berlin-Mitte, a five minute walk from Alexanderplatz and directly in front of underground station Schillingstraße.

PUBLIC TRANSPORTATION

From Alexanderplatz: underground line U5 to Schillingstraße

From Hauptbahnhof (main station): underground line U5 to Schillingstraße

From airport BER: Regional trains FEX/ RE7/ RB 14 to Hauptbahnhof (main station), underground line U5 to Schillingstraße

PARKING

There is sufficient public parking available.